

DUNWOODY
COLLEGE OF TECHNOLOGY



DUNWOODY

SAFE HANDS-ON LEARNING
IN A HANDS OFF WORLD



As a small, private, non-profit institution of higher education, Dunwoody College of Technology is committed to changing lives by building opportunities for graduates to have successful careers, to develop into leaders and entrepreneurs, and to engage in "the better performance of life's duties." We value collaboration, inclusion, curiosity, and inspiration as we work together in times of crisis and change. Together we are taking action, and preparing to meet the challenges of this pandemic head on.



DUNWOODY SAFE

The Dunwoody Safe plan is a comprehensive approach to delivering hands-on education, in a safe, physically-distanced way due to the COVID-19 pandemic. It incorporates the College's Preparedness Plan, its Return to In Person Instruction planning, and the preparation for a Fall 2020 start that includes:

- Access to hands-on, in-person instruction in our labs, shops, and studios
- In-person and virtual support for students

All aspects of the plan meet or exceed recommendations from the Centers for Disease Control and the Minnesota Department of Health. The College also solicited feedback on its fall planning from students and employees.

The Dunwoody Safe plan is one piece of Dunwoody's overall approach to creating a safe campus environment for our students, employees, and visitors. Information about the College's Public Safety & Security measures can be found online at dunwoody.edu/public-safety.

Together, Dunwoody is living up to its "Born to Do" motto, as it works to keep our students, employees, and visitors safe, while still delivering the high-quality education Dunwoody is known for.

The College is utilizing its small class sizes, low student-to-teacher ratios, and large lab spaces to restructure its physical environment in ways that will safely allow for hands-on activities in small group settings.

No large campus community can guarantee a COVID-19 free environment, and the steps described in this plan recognize that reality. Dunwoody expects all students, employees, and visitors to assume responsibility for their own health and safety and act in a manner that demonstrates respect for those around them.







PUTTING SAFETY FIRST

The health and safety of the Dunwoody Community is our top priority, and is reflected in the following key measures the College is taking, including:

1. Asking all individuals to take responsibility for their own health both in and outside of Dunwoody, and to follow the guidelines and expectations set forth in the Dunwoody Safe plan.
2. Implementing campus-wide health and safety protocols that include: health screenings, requiring face coverings and/or the use of Personal Protective Equipment (PPE), social distancing, and the cleaning and sanitization of campus surfaces and equipment.
3. Reconfiguring physical spaces to allow for safe, physically-distanced activities in small-group settings.
4. Restructuring classes and schedules to meet safe capacity and building usage, as required by the State.
5. Providing support and engagement in new virtual ways to accommodate students' needs.
6. Providing the same, high-quality education Dunwoody is known for in new safe and innovative ways.
7. Preparing for contingencies and changes as the pandemic situation evolves.





COVID-19 PREPAREDNESS PLAN

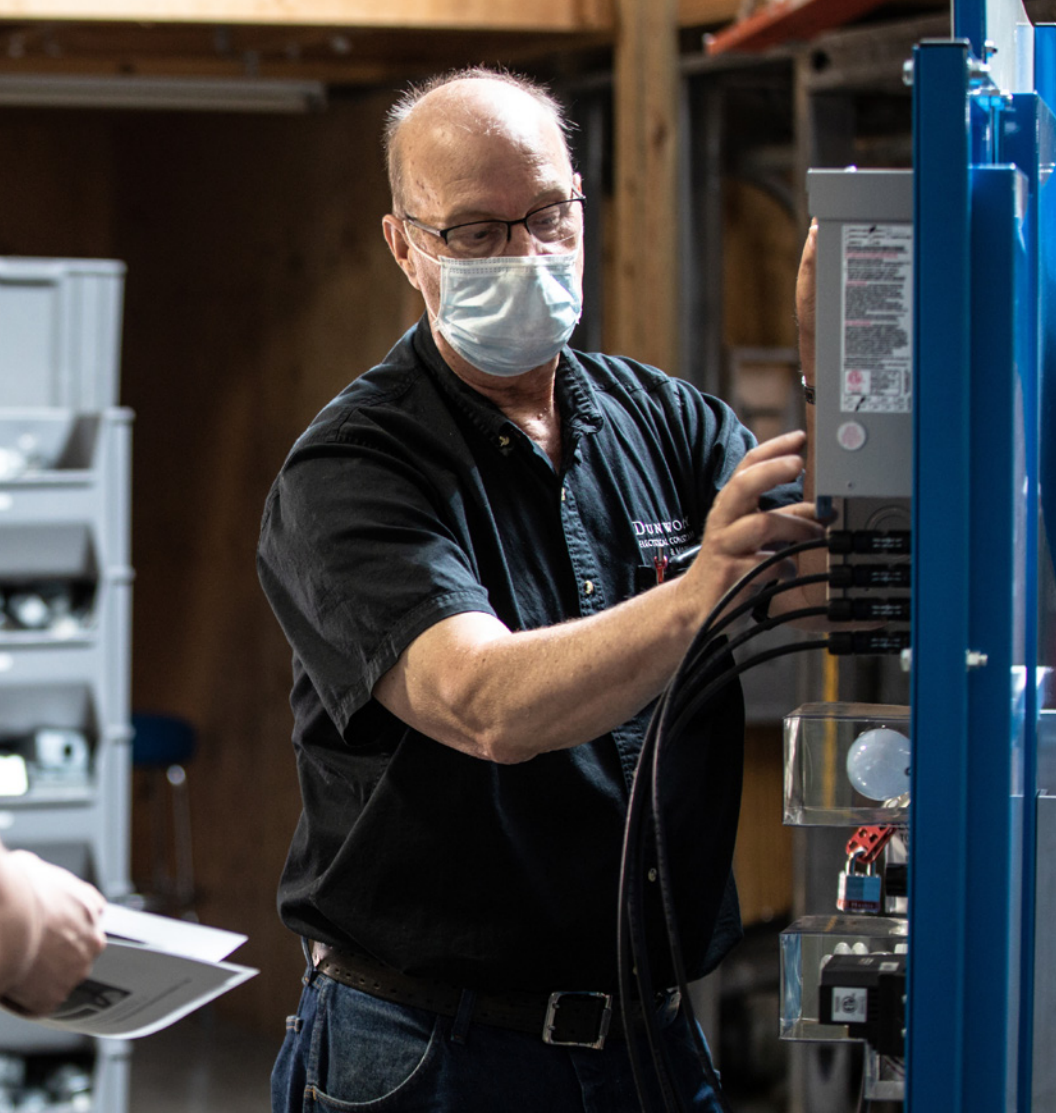
Dunwoody College of Technology is committed to providing a safe and healthy workplace for employees and students and has developed its Preparedness Plan in response to the COVID-19 pandemic.

Our goal is to mitigate the potential for transmission of COVID-19 at Dunwoody, and that requires full cooperation among faculty, staff, and students.

Only through this cooperative effort can we establish and maintain the safety and health of our college community.

To review the complete Preparedness Plan, visit

DUNWOODY.EDU/COVID19



THE PLAN ADDRESSES THE FOLLOWING:

- hygiene and respiratory etiquette;
- engineering and administrative controls for social distancing;
- housekeeping – cleaning, disinfecting and decontamination;
- prompt identification and isolation of sick persons;
- communication and training; and
- management and supervision necessary to ensure effective implementation of the plan.



ENHANCED CLEANING & SAFETY MEASURES

Beginning back in March, Dunwoody began implementing new standards for a clean and healthy environment. These have included:

- Sealing the floors in areas of the buildings to make them impermeable and easy to disinfect, to prevent the spread of viruses.
- Using a new backpack unit to spray a commercial grade disinfectant in all areas of the buildings, including classrooms, offices, labs, common areas, and restrooms. This disinfects the air, which helps kill any airborne virus.
- Sanitizing surfaces by wiping down all areas of the building including computers, keyboards, desks, equipment, and elevator buttons on a daily basis. Frequently touched items in common areas are sanitized several times a day.

HEALTH SCREENINGS

All students, employees, and visitors to the Dunwoody campus will complete a thermal temperature check and affirm they are symptom free prior to entering the building.

ASKING EVERYONE TO DO THEIR PART

- Stay home if you are sick
- Wash your hands
- Cover your cough or sneeze
- Social distance
- Wear a mask

GUIDED BY THE EXPERTS

Dunwoody's guidelines, actions, and protocols all meet or exceed guidelines established by the Centers for Disease Control and Prevention and the Minnesota Department of Health.





PLAN FOR RESUMING IN-PERSON INSTRUCTION

Dunwoody recognizes the unique challenges presented by delivering hands-on education in a COVID-19 environment. As such, College faculty, staff, deans, and managers have been preparing for a variety of scenarios to deliver Dunwoody's curriculum in new and innovative ways.

RECONFIGURED PHYSICAL SPACES

Changes to Dunwoody's labs, shops, and studios have been made to allow for safe, physically-distanced hands-on learning in small-group environments. These changes have included:

- Installing protective shields or barriers in areas of the building as needed, including in lab spaces.
- Investing in additional equipment and tools to reduce sharing between individuals.
- Creating take-home learning activities to allow for hands-on learning – from home.
- Installing touch-free handles at the doors of the West Entrance of the main building.
- Moving from group activities to individual learning in hands-on, lab settings.
- Determining traffic flow to maintain social distancing in hallways and common spaces.



RESTRUCTURED SCHEDULES

To minimize the number of individuals on campus at any one time, Dunwoody is reworking its schedules to create smaller learning groups.

INNOVATIVE ONLINE LEARNING

The College is leveraging its existing technology, including its Learning Management System, to deliver lectures, demonstrations, and one-on-one support, including tutoring, in online formats.



DUNWOODY
COLLEGE OF TECHNOLOGY

For more information, contact:

FACILITIES

612.381.3335 | vpoveda@dunwoody.edu

STUDENT AFFAIRS

612.381.3437 | studentaffairs@dunwoody.edu